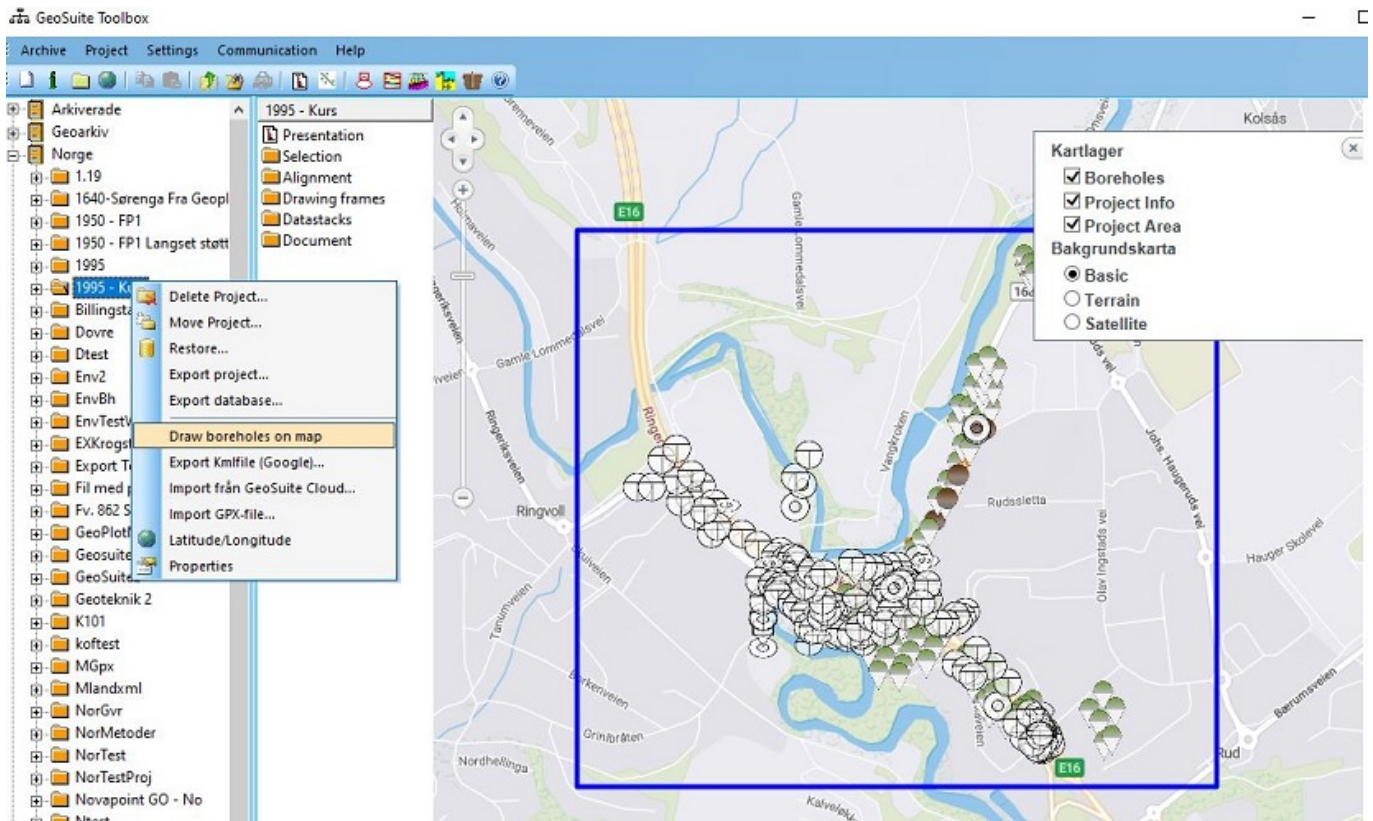


Version 16.1.5

Date 2019-12-09

Updates for Novapoint GeoSuite Toolbox/Archive

Trimble Maps as a new alternative to Google Maps. Default is Trimble Maps but can be changed by Menu-Settings and Settings dialogue.



- * Soil Test data as an option for KML-export. Also include Row1-3 from borehole description if not empty
- * Bug fix: Project path restricted to 128 chars in New Project dialogue
- * More symbols for combination of methods and KML-export
- * When project not found, now the program present a repair dialogue
- * Identify archived project and move to another archive

Updates for Novapoint GeoSuite Presentation

- * Support for AutoCAD 2020
- * Bug fix: GeoSuite fails to identify some versions of Civil 3D as AutoCAD
- * Bug fix: Cross sections from Novapoint and a lot of sections GeoSuite sometimes complains: No cross-section drawing
- * Bug fix: If setting DDE=NO and digitize borehole in AutoCAD, license check stops working
- * Scriptfiles to set colors if use of Color By Layer. These can easily be edited.
- * Bug fix: Borehole with name 8 characters fails to update legend in AutoCAD.
- * ObjectInfo in AutoCAD now presents textCode for Interpreted points

* Bug fix: Changed behaviour for new data model and found duplicate GUIDs

Norwegian version

* Bug fix: Gamma text appears in Soil Test even if no data is given

* Reading from old Geoplot-databases requires NP 18.40. More informative error message

Swedish version

* Bug fix: If Alignment is negative GeoSuite displays profile length incorrectly

* Some changes in English resource files

* Added: Coordinate system UK72, old system for Uppsala

* Max water content increased from 200 to 2000

* Added : A new option to draw "Matningskraft" in soil. (According to SGF it is drawn only in rock) New option= SGF+KRAFT

* Bug fix: Settings for VIM-registration and weight has disappeared.

Updates for Novapoint GeoSuite Stability

* Layer names increased from 15 to 25.

* Bug fix: New material and change color before drawing the line could produce input error

Updates for Novapoint GeoSuite Pilegroup

- Increased maximum number of segments in Splice (Calculation engine)

Updates for Novapoint GeoSuite Soil Data Interpretation

- Now requires a valid license